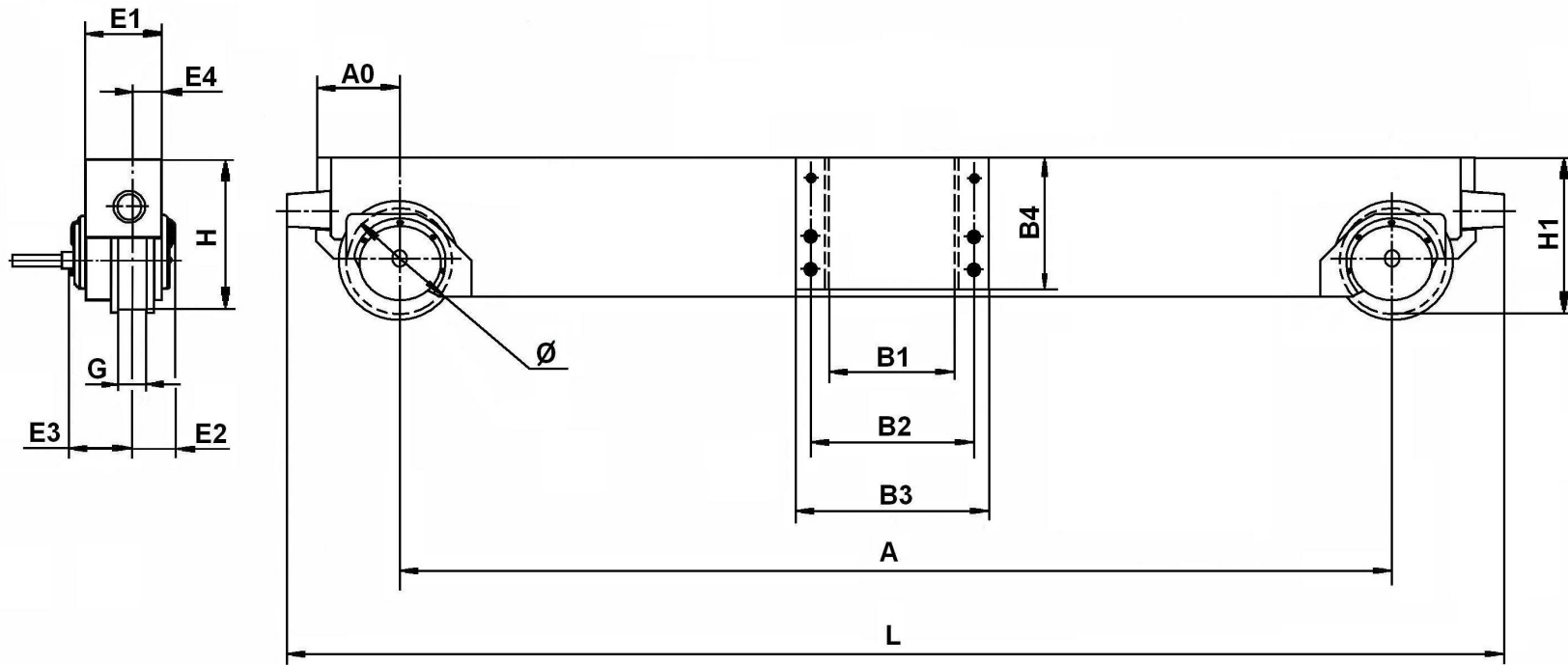


# SINGLE GIRDER END CARRIAGES



END CARRIAGE TYPE	MAX WHEEL LOAD			DIMENSIONS (mm)																	MAX BRIDGE SPAN (m)	WEIGHT <sup>**</sup> (kg)	
	M4	M5	M6	↓	G	A	A0	L	H	H1	E1	E2	E3	E4	B (min...max)	B1	B2	B3	B4	B5			
T11945	40	36	33	200	70	2350	175	2850	335	317	194	105	155	72	180...230	236	315	395	290	158	16	450	
T11946	44	39	36			2700	175	3200	335	318	196	105	155	73	230...275	280	360	440	290	159	20	560	
T11948	60	54	49			250	2700	200	3240	375	360	210	110	175	80	230...275	280	360	440	330	166	20	780
T11944	48	43	39			200	3700	175	4200	375	358	196	105	155	73	290...320	325	405	485	330	159	25(5ton)	850
T11957*	32	29	26	125	60	1500	150	1880	248	236	140	88	88	70	...	0	220	320	220	102	12,5	216	
T11958	36	32	29	160	70	2200	160	2680	267	257	152	94	94	76	180...230	236	315	395	235	110	16	350	

Rail width Min/Max 40/50mm

S1=12mm (except for type 11943, 11958, 11954, 11955, 11957 with S1=10mm)

S2=20mm

(\*) End carriage for HEA-beam bridges.

(\*\*) Weight is referred to two end carriages without drive units.