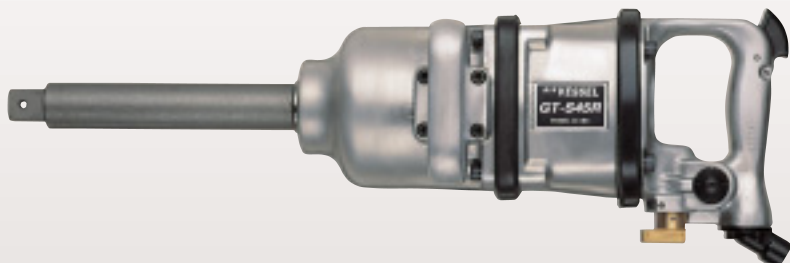


AIR IMPACT WRENCH

Square Drive Size 1" (Pin-lock)



No.GT-S45R



No.GT-S45R-1.5
(Short Anvil)

Model Changed for High Torque Durability!

Made possible with more synchronized parts combination in its heavy duty motor running.

Applications: Rough use outdoor fastening such as vehicle maintenance, tire change, earth moving equipment, bridges, etc.

Specifications:

EDP No.	Model No.	Torque N.m Range (ft.lbf)	FreeSpeed rpm	Air Consumption m ³ /min.	Overall length mm	Weight kg	Air hose Size	Body Form
338502	GT-S45R	490-1,765 (362-1,302)	3,200	1.0	593	16.2	PT1/2	Straight
	GT-S45R-1.5	490-1,765 (362-1,302)	3,200	1.0	402	14.6	PT1/2	Straight

Accessories : VESSEL Air coupling BPB-3 / L-type wrench A/F6mm 1pc.each



Remarks

For your safety use, please read carefully and thoroughly attached instruction manuals before using this tool.

VESSEL CO., INC.
OSAKA, JAPAN

Distributed by: