

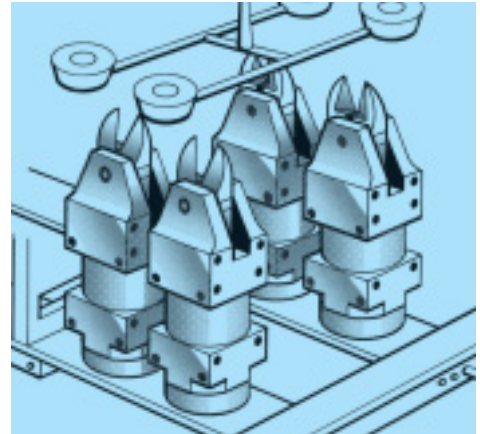
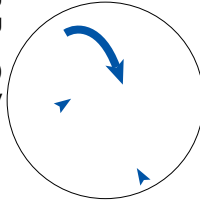
Capacity is listed as instant reference and depends on operation conditions.

SQUARE AIR NIPPER

NS Series

Optimum for mounting to automatic machine and jig

- * The screw holes are provided on five surfaces, therefore, mounting to the machine is easy.
- * Light weight and Compact type enabling easy-handling and simple setting is possible to nip many pcs. (quantity) at a time. Also applicable with complicated degating machine.
- * Further, together with cutting of plastic moldings, the wire cutting with winding machine, etc. and other working in wide range using special blade can be taken.
- * The main body end is 180° - turned. Further, two suction(intake) ports are provided, and so the suction position can be optionally changed depending on the mounting place.



GT-NS3

GT-NS5

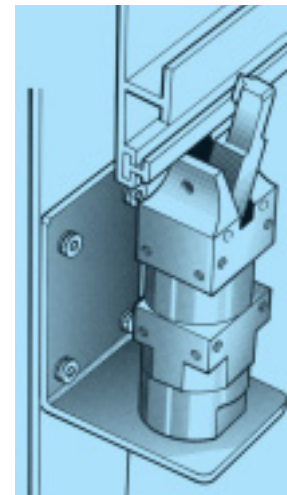
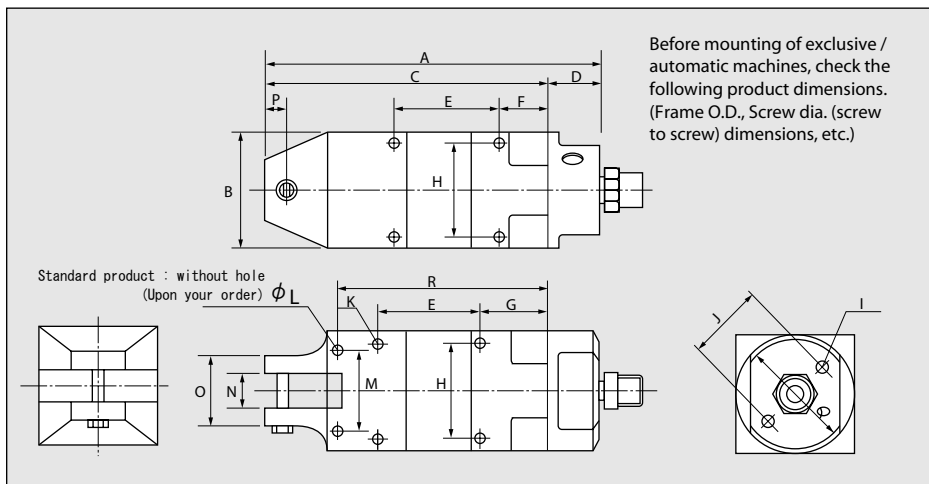
GT-NS20



Blade is optional. Use three-port solenoid valve and air foot valve (three-way).

EDP No.	Model No.	O.A.L mm	Frame Dia. mm	Weight g	Air con- sumption cm ³ /str.	Applied Pressure		Working Air Pressure		Capacity ϕ mm					
						N	lbf	MPa	psi	Copper	Steel	Piano Wire	Plastics	Hard Plastics	Bare terminal
360012	GT-NS3	110	23	95	45	294	66	0.4-0.5	57-71	1.0	0.5	0.2	2.0		
360013	GT-NS5	94	30	135	64	392	88	0.4-0.5	57-71	1.0	0.5	0.3	2.0		
360014	GT-NS7	113	36	215	116	490	132	0.4-0.5	57-71	1.6	1.0	0.5	3.0	2.0	
360009	GT-NS10L	113	36	215	116	588	132	0.4-0.6	57-85	1.8	1.2		4.0	2.6	
360010	GT-NS20	129	45	370	230	1372	309	0.5-0.6	71-85	2.6	2.0	1.0	7.0	5.0	
360011	GT-NS30	170	56	685	584	2744	617	0.5-0.6	71-85	3.3	2.8	1.2	10.0	6.5	1.25/2.0mm ²

* Hose coupling : PT1/4 (Body PT1/8) * Air hose bore diameter : 5mm * Overall length : Accessories, hanger part not included. * Weight : Accessories not included.



(mm)

Model No.	A	B	C	D	E	F	G	H	I	J	K	ϕL	M	N	O	P	Q	R
GT-NS3	110	23	89	21	40	19	24	19	M3Depth8	17	M3Depth3.5	3.3	14	7	23	7	23	71
GT-NS5	94	30	74	20	30	14	19	24	M4Depth10	20	M3Depth5	4.3	20	7	23	7	30	55
GT-NS7	113	36	93	20	30	18	23	28	M4Depth10	24	M4Depth5.5	4.3	28	9	23	7	36	65
GT-NS10L	113	36	93	20	30	18	23	28	M4Depth10	24	M4Depth5.5	4.3	28	12	26	7	36	65
GT-NS20	129	45	109	20	40	19	24	36	M5Depth12	30	M4Depth7	5.3	30	12	26	9	45	81
GT-NS30	170	56	150	20	60	20	30	46	M6Depth12	40	M5Depth10	5.3	40	17	36	15	56	110

CAUTION ! Shut off the air supply before blade mount/dismount.